

**energize
the earth
buy the sun**

XSERIES

MICROMORPH 3

| Electrical Data at STC * | | | X3-115 | X3-120 | X3-125 | X3-130 | X3-135 | X3-140 |
|------------------------------------------------|--------------------------|-------------------|--------|--------|--------|--------|--------|--------|
| Max. Electrical Output (-0/+5 W _p) | P _{max} | [W _p] | 115 | 120 | 125 | 130 | 135 | 140 |
| Voltage at P _{max} | U _{mpp} | [V] | 121 | 122 | 124 | 125 | 127 | 128 |
| Open Circuit Voltage | U _{oc} | [V] | 161 | 163 | 165 | 166 | 168 | 169 |
| Short Circuit Current | I _{sc} | [A] | 1.12 | 1.15 | 1.17 | 1.20 | 1.23 | 1.25 |
| Temperature Coefficient of P _{max} | γ | [%/°C] | -0.3 | -0.3 | -0.3 | -0.3 | -0.3 | -0.3 |
| Temperature Coefficient of U _{oc} | β | [%/°C] | -0.4 | -0.4 | -0.4 | -0.4 | -0.4 | -0.4 |
| Temperature Coefficient of I _{sc} | α | [%/°C] | +0.07 | +0.07 | +0.07 | +0.07 | +0.07 | +0.07 |
| Open Circuit Voltage, initial | U _{oc, initial} | [V] | 163 | 165 | 166 | 168 | 170 | 171 |
| Short Circuit Voltage, initial | I _{sc, initial} | [A] | 1.14 | 1.17 | 1.20 | 1.22 | 1.25 | 1.28 |

* STC: irradiance of 1.000 W/m², spectral distribution corresponding to AM1.5, module temperature of 25 °C

| Electrical Data at NOCT ** | | | X3-115 | X3-120 | X3-125 | X3-130 | X3-135 | X3-140 |
|-----------------------------------|------------------|-------------------|--------|--------|--------|--------|--------|--------|
| Max. Electrical Output | P _{max} | [W _p] | 86 | 90 | 94 | 98 | 102 | 105 |
| Voltage at P _{max} | U _{mpp} | [V] | 110 | 111 | 113 | 114 | 116 | 117 |
| Open Circuit Voltage | U _{oc} | [V] | 147 | 148 | 150 | 151 | 153 | 154 |
| Short Circuit Current | I _{sc} | [A] | 0.91 | 0.93 | 0.95 | 0.97 | 1.00 | 1.01 |
| Normal Operating Cell Temperature | NOCT | [°C] | 45 | 45 | 45 | 45 | 45 | 45 |

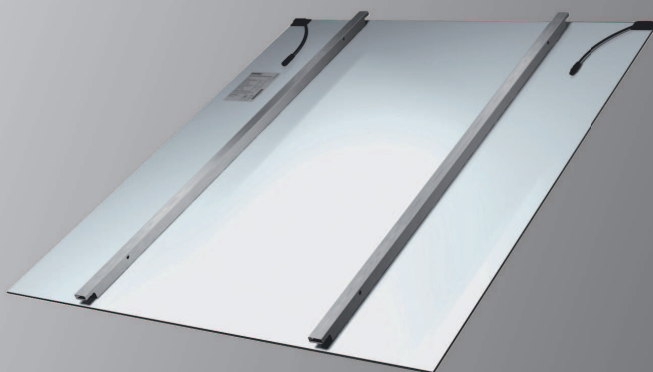
** Data are given for an irradiance of 800 W/m² and a wind speed of 1 m/s

| Electrical Data at 200 W/m ² *** | | | X3-115 | X3-120 | X3-125 | X3-130 | X3-135 | X3-140 |
|---------------------------------------------|------------------|-------------------|--------|--------|--------|--------|--------|--------|
| Max. Electrical Output | P _{max} | [W _p] | 23 | 24 | 25 | 26 | 27 | 28 |

*** Data are given for a spectral distribution corresponding to AM1.5 and a module temperature of 25 °C

Please read carefully our detailed installation manual before installing the photovoltaic modules. The instructions in the installation manual must always be observed (e.g. no grounding of minus pole in case of using transformerless inverters).

All electrical data are averages of production data and are subject to a measurement tolerance of +/- 5 %. Inventux does not issue any guarantee for the accuracy of this data for future production batches. All data may be subject to change without prior notice.



X SERIES

MICROMORPH

General Data

| | |
|--------------------------------------|-------------------------------------------------------------------------|
| Module Type / Cells | Micromorph (a-Si/μc-Si) / 125 cells, monolithic series connection |
| Max. Reverse Current | 4 A |
| Max. System Voltage | 1,000 volt |
| Design Certification | IEC 61646 |
| Electrical Classification | A (IEC 61730) |
| Product Warranty / Output Guarantee* | 5 years / 10 years on 90 % of P_{max} * 25 years on 80 % of P_{max} |

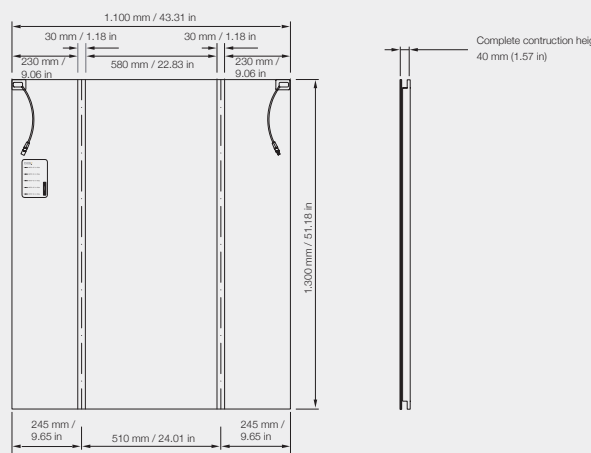
* Complete and most recent terms and conditions of warranty and guarantee shall prevail

Mechanical Data

| | |
|----------------------------------------|-------------------------------------------------------------|
| Dimensions incl. Back Bars (W x H x D) | 1,100 mm x 1,300 mm x 40 mm (43.31 in x 51.18 in x 1.57 in) |
| Surface area | 1.43 m ² (15.39 sq ft) |
| Weight | 26 kg (57.3 lbs) |
| Cables | 2.5 mm ² / length 200 mm (7.87 in) |
| Connectors | LC3 (MC3 compatible), IP 68 |
| Module Mounting | Stainless steel carrier profiles on back of module |
| Max. Angle of Inclination | 45° |
| Max. Load | 4,500 Pa |

Packaging Details

| | |
|------------------------|-----------------------------------------------------------------|
| Type | Outer packaging of corrugated cardboard on wooden pallet (IPPC) |
| Packaging Unit | 22 modules |
| Dimensions (W x H x D) | 1,200 mm x 1,500 mm x 800 mm (47.24 in x 59.05 in x 31.49 in) |
| Weight | 600 kg (1,322 Pa) |



Rear view, side view

Art. No. 163012 08/2012 1 EN (Subject to change. Contents protected by copyright. Permission must be obtained for duplication and any other use.)